

Vidya Bhawan Balika Vidyapeeth Lakhisarai

Arun Kumar Gupta

Class 12<sup>th</sup>

Subject Biology

Date:- 09.05.2021

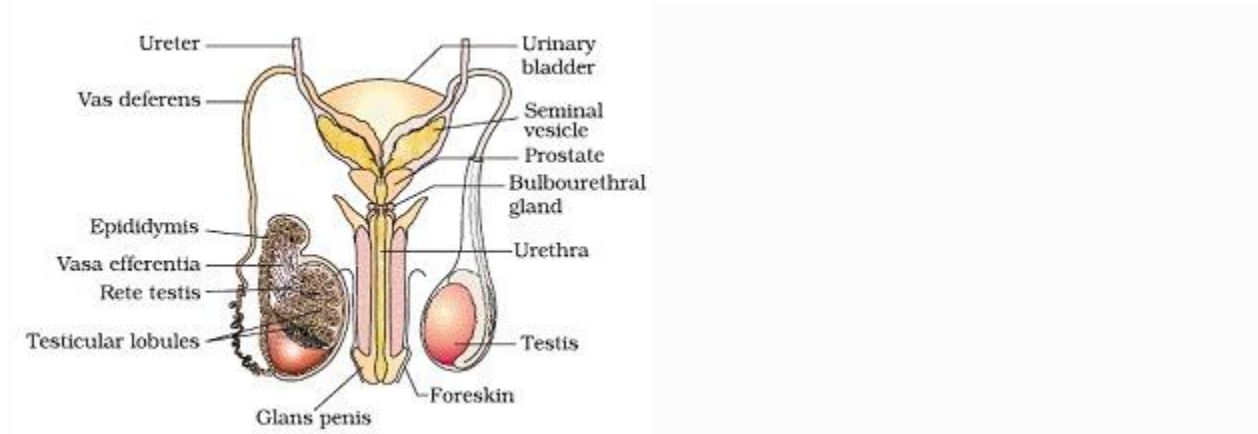
## Human Reproduction

Humans are sexually reproducing and viviparous. The reproductive events in humans include formation of gametes (gametogenesis), i.e., sperms in males and ovum in females, transfer of sperms into the female genital tract (insemination) and fusion of male and female gametes (fertilisation) leading to formation of zygote. This is followed by formation and development of blastocyst and its attachment to the uterine wall (implantation), embryonic development (gestation) and delivery of the baby (parturition)

The Male Reproductive System: **It consists of:**

- a) Primary sex organs i.e. a pair of testes suspended in a scrotum.
- b) Secondary sex organs i.e. a pair of ducts each differentiated into rete testis, vasa efferentia, epididymis and vas deferens, ejaculatory duct and the associated glands
- c) External genitalia

- The testes are situated outside the abdominal cavity in a pouch called **scrotum**, which help in maintaining the low temperature of testes necessary for spermatogenesis.
- Each testes has about 250 testicular lobules and each lobule contain highly coiled **seminiferous tubules** in which sperms are produced. Each seminiferous tubules is lined by two types of cells, **spermatogonia** ( male germ cell) and **Sertoli cells**.
- **Leydig cells** or interstitial cells present around the seminiferous tubules synthesize and secrete androgen hormone.



- Ejaculatory duct store and transport the sperm from testes to outside through urethra which originate from urinary bladder and extend through penis to its external opening **urethral meatus**.
- The penis is male external genitalia. The enlarged end of penis is called the **glans penis** is covered by a loose fold of skin called **foreskin**.
- Male accessory glands include paired **seminal vesicles**, **prostate** and **paired bulbourethral glands**. Secretion of these glands forms the seminal plasma which contains fructose, calcium and enzymes. The secretion of bulbourethral glands also helps in lubrication of the penis.